

COMPANY PROFILE



Your Growth Partner

➤ We Bring Prominent Energy, Chemical, and Infrastructure Solutions

PT Chandra Asri Pacific Tbk (Chandra Asri Group) grows into a **prominent provider of energy, chemical, and infrastructure solutions in South East Asia**. As a central player in the petrochemical industry and the only factory operating a Naphtha Cracker, we demonstrate our role in producing everyday necessities.

Currently, we have expanded our business portfolio to enter the energy, chemical, and infrastructure industries, which include the sectors of electricity, water, logistics, and ports & storage, affirming our contribution as a pillar of the national industry.



➤ The Journey of Chandra Asri Group

Indonesia's largest integrated petrochemical producer, operating the country's first Naphtha Cracker plant, as well as chemical and infrastructure facilities.

1992

PT Tri Polyta Indonesia Tbk (TPI) began commercial production of Polypropylene with two trains, each with a capacity of 160 kilotons per annum (KTA).

2011

- Building on the strength of the merger between TPI and CA, the company became PT Chandra Asri Petrochemical Tbk (Chandra Asri).
- Formed a partnership with SCG Chemicals Co., Ltd. as one of the Company's investors.

2013

Formed a strategic partnership in the synthetic rubber business with Compagnie Financiere Michelin by establishing a joint venture, PT Synthetic Rubber Indonesia (SRI).

2021

Established a long-term strategic partnership with Thai Oil Public Company Limited (Thaioil) to support the development and construction of the second integrated petrochemical complex.

2023

- Transformed into PT Chandra Asri Pacific Tbk (Chandra Asri Group) due to the Company's business diversification.
- Secured investment from Electric Generating Public Company Limited (EGCO Group) and established a partnership in infrastructure solutions through PT Chandra Daya Investasi (now PT Chandra Daya Investasi Tbk or CDI Group).

TPIA

is our stock code listed on the Indonesia Stock Exchange.



2007

PT Chandra Asri (CA) increased the capacity of its Ethylene plant to 600 KTA and expanded its pipeline network to 45 km.

2014

Designated by the Government as a National Vital Object due to the Company's strategic role in the national industry.

2020

Approved the merger between Chandra Asri and PT Styrimono Indonesia (SMI).

2025

Completed the acquisition of all shares of Shell Energy and Chemical Park (SECP) Singapore in partnership with Glencore Plc., now known as Aster Chemicals and Energy Pte. Ltd. (Aster).

Leading the petrochemical market in Indonesia and Southeast Asia, and entering the chemical and infrastructure industries to support domestic downstream integration. Consistently collaborating as a growth partner for various stakeholders.

1995

PT Chandra Asri (CA) began commercial production of Ethylene Cracker with a capacity of 520 KTA.

Our Vision, Mission, and Core Values

VISION

South East Asia's leading energy, chemical and infrastructure solutions company

MISSION

Creating value and fostering partnerships for a sustainable future

CORE VALUES COMPANY

I

Integrity

Act transparently, follow rules and ethics

S

Safety

Building a safe, healthy, and sustainable working environment

T

Teamwork

Building collaboration for business excellence

A

Accountability

Being responsible for own tasks and performance

R

Respect

Appreciate and care for others



➤ Together We Advance

We are strong backing from long-term marquee strategic regional investors committed to the development of business.

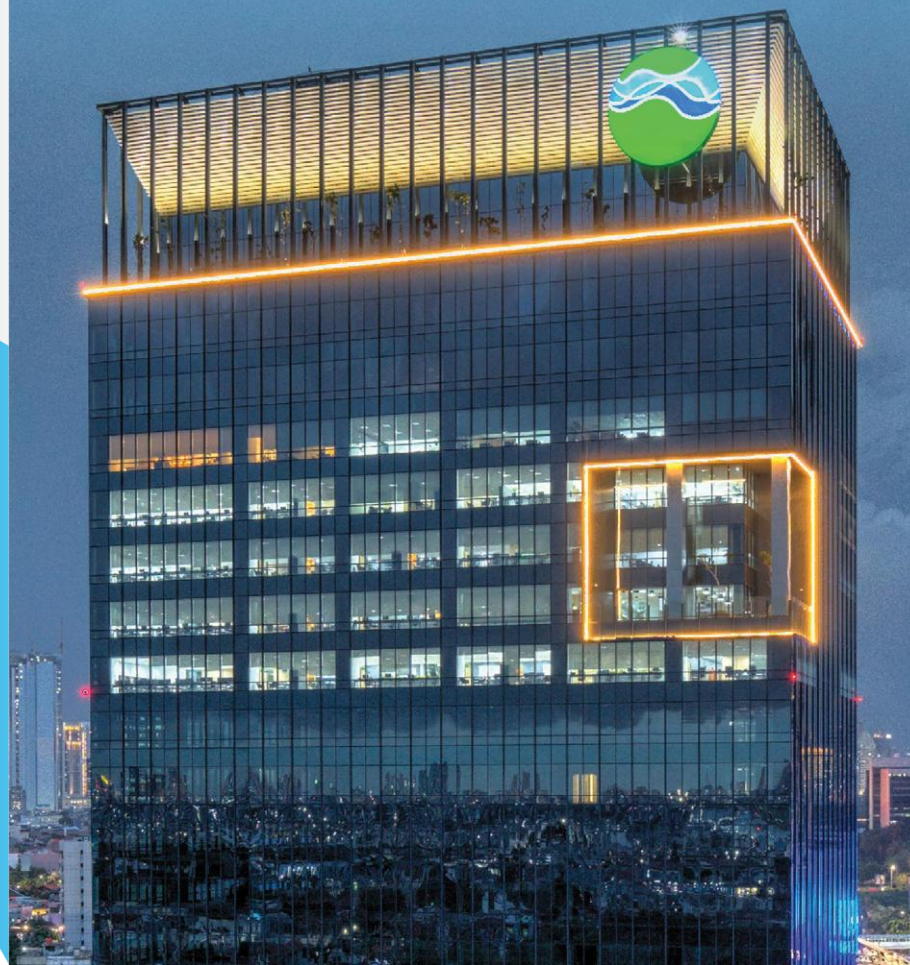
We welcomed SCG Chemicals in 2011 as one of our strategic partners and shareholders, joined Barito Pacific, who is Chandra Asri's majority shareholder.

Thai Oil joined in 2021 as a strategic investor to build the second world-scale integrated petrochemical complex in Indonesia.

Barito Pacific 

Barito Pacific

Growing and thriving alongside major local business groups in the fields of property, plantations, chemicals, infrastructure, energy, and renewable energy.



 SCGC

SCG Chemicals

Partners to implement operational best practices with one of the largest integrated petrochemical companies in Asia and a key industry leader.



 Thai Oil

Thai Oil

Collaborating to strengthen the supply chain and build new businesses with the largest, most integrated, and efficient petrochemical companies, refinery owners, and oil suppliers in Thailand.



Partnerships with World-Class Institutions

All partners play a vital role in supporting the vision, growth, and innovation of Chandra Asri Group in the chemical and infrastructure industries in Indonesia.



EGCO Group:

Providing infrastructure solutions with a focus on operational excellence and environmental sustainability.



Krakatau Steel:

Crucial support for the infrastructure business, demonstrating strong synergy in driving industry growth.



Michelin:

Strategic partnership with PT Synthetic Rubber Indonesia (SRI) to produce high-quality tire raw materials.



Posco:

A partner of PT Krakatau Posco Energy (KPE), providing reliable power sources to ensure stable energy supply.



Salim Group:

Plays a key role in the management of Jetty & Tank Farm through PT Redeco Petrolin Utama (RPU).



Glencore:

Strategic partnership through CAPGC Pte. Ltd. to support Aster's business development in Singapore.

➤ South East Asia's Leading Energy, Chemical, and Infrastructure Solutions Company



➤ Introducing Chandra Asri Group's Business Lines

As a commitment to fulfilling domestic needs and supporting strategic sectors, Chandra Asri Group has diversified into several business categories, commonly referred to as business lines.



Energy

This business line engages in the management and operation of refineries, including crude oil processing



Chemicals

The company continues to seize opportunities to add value to the petrochemical product chain, which now extends into the chemical sector



Infrastruktur

The infrastructure business line is overseen by the subsidiary dedicated to carry out capital investments and manage assets in the energy, water, ports & storage, and logistics industry



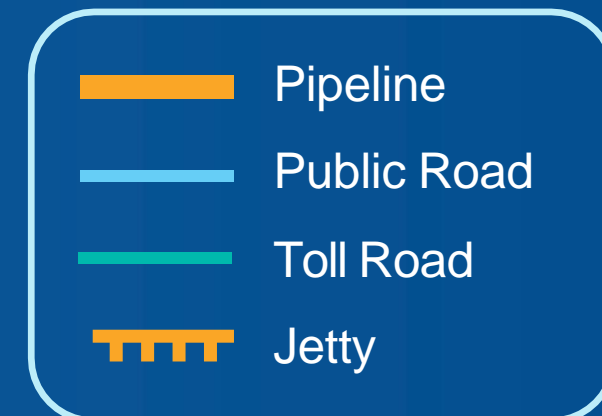
Trading

This business line serves as an extension of Chandra Asri Group in serving domestic and international customers and importing the company's main raw materials, namely Naphtha, and other chemicals

Key Assets Strategically- Located in Cilegon, the leading industrial area in Java

1. Chandra Asri PP Plant
2. Chandra Asri OPE Plant
3. PT Chandra Pelabuhan Nusantara
4. Nippon Shokubai Indonesia
5. Asahimas Chemical
6. Pelindo II Port
7. Krakatau Bandar Samudera Port
8. Cabot Indonesia
9. Lotte Chemical Titan
10. Indonesia Power (PLTU Suralaya)
11. Sulfindo Adiusaha
12. Styrene Monomer Plant
13. RPU
14. Gajah Tunggal
15. Polychem Indonesia
16. Arbe Styrindo
17. KCE
18. Aster Chemicals and Energy Pte. Ltd. (Aster)

- Adjacent and interlinked with customer's facilities
- Located 123 km northwest of Jakarta
- Considered among Indonesia's Vital Assets



➤ 3 Main Pillars of Strategy for the Growth of Chandra Asri Group

Chandra Asri Group is shaping its future through robust strategies, serving as key drivers of growth and sustainability.

1

Exponential Growth:

- Pioneering the future of the chemical industry, with a focus on organic growth and CA-EDC plant development projects, driving competitive advantage.
- Through Programmatic M&A, Chandra Asri Group expands its portfolio, particularly in infrastructure business, paving the way for peak growth.

2

Sustainability and ESG:

- Embracing the Crystalize Framework as the primary guide in sustainability principles, realizing commitments to environmental and social responsibility.
- Expanding strategic partnerships as the foundation for sustainability, creating positive impact for society and the environment.

3

Digital Transformation:

- Embracing a new era with the implementation of a new ERP system, enhancing operational efficiency, and optimizing company performance.
- Through the digitization of plants, Chandra Asri Group is undergoing transformation towards a digital landscape, ensuring tighter connections in facing future challenges.



➤ Exponential Growth

➤ Chandra Asri Group's Programmatic M&A Strategy

As part of its exponential growth, Chandra Asri Group, through Chandra Daya Investasi (CDI), will place a greater focus on developments related to the infrastructure business.

- **Chemicals:** Aimed at supporting the development of Chandra Asri Group as a leading and selected petrochemical company in Indonesia, with a track record of growth.
- **Cilegon:** Strategically located in Cilegon, the home base of Chandra Asri for the past 31 years, where it is close to key customers, distribution networks, and logistics.

- **Diversity:** Exploring various business lines related to Chandra Asri Group's core competencies, for more diversified sources of income to avoid dependence on a single market.
- **Depth:** Exploring new opportunities for sustainable efficiency improvement, to strengthen margins and enhance the overall business development of Chandra Asri Group with an extensive infrastructure-based network.

- **Indonesia:** Beneficial initiatives for Chandra Asri Group considering its strong position as a market leader in the Indonesian and highly attractive Southeast Asian markets.
- **Integration:** New prospects to support Chandra Asri Group's largest integrated petrochemical complex located in Indonesia, as well as the second largest petrochemical complex owned by Chandra Asri Group in the future.

Energy Business Line

Chandra Asri Group and Glencore officially acquired all shares of Shell Singapore Pte. Ltd. (SSPL) in Shell Energy and Chemical Park (SECP), now known as Aster Chemicals and Energy Pte. Ltd. (Aster), on April 1, 2025. The acquisition was carried out through CAPGC Pte. Ltd., a joint venture between Chandra Asri Capital Pte. Ltd., a subsidiary of Chandra Asri Group, and Glencore Asian Holdings Pte. Ltd., a subsidiary of Glencore.

Aster's integrated facilities are located across two sites: Bukom and Jurong Island. The energy business is operated at Aster Bukom, which houses a refinery with a capacity of 237,000 barrels per day and an ethylene cracker unit with a capacity of 1.1 million tons per annum.



Refinery in Aster Bukom



Ethylene Cracker and petrochemical plant at Aster Jurong Island

Chemical Business Line

Integrated Chemical Plants with
Top-Notch Facilities

Maintaining and improving facilities is our strategy in developing new businesses and managing infrastructure more efficiently while still prioritizing safety and business continuity.

Our Plant

Olefins
Plant

Polyolefins
Plant

Styrene
Monomer
Plant

Butadiene
Plant

MTBE &
Butene-1
Plant

Aster
Jurong
Island

Olefins Plant

Operates the only Naphtha Cracker in Indonesia producing Ethylene, Propylene, Pygas, and Mixed C4.



Polyolefins Plant

The largest Polyethylene and Polypropylene plant in Indonesia with various product applications for everyday life.

Styrene Monomer Plant

The sole Styrene Monomer producer with 100 percent domestic market share.

Butadiene Plant

The sole Butadiene producer in Indonesia producing high-quality Butadiene and Raffinate-1. Butadiene is a crucial raw material used in synthetic rubber production, a raw material for tire manufacturing.

MTBE & Butene-1 Plant

The first in Indonesia. MTBE enters the octane booster market, while Butene-1 will be absorbed by internal operations and the remainder targeted for the domestic market.



Aster Jurong Island

Aster Jurong Island spans more than 60 hectares and produces key chemical products such as ethylene oxide, ethoxylates, styrene monomer, and propylene oxide.

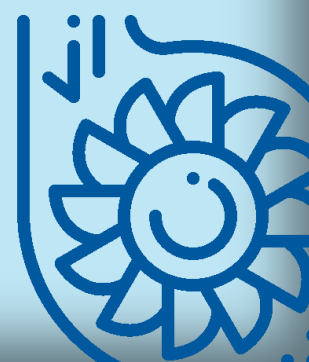
Supporting Facilities

We incorporate state-of-the-art technology and support facilities to navigate the operations of our integrated petrochemical complexes in Cilegon and Serang.

**On-Site
and Satellite
Warehouse**



**Gas Turbine
Generator**



**Steam Turbine
Generator**



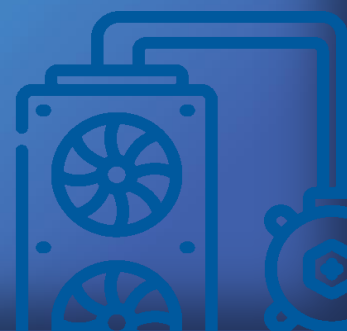
**Water
Treatment
Facility**



Boiler



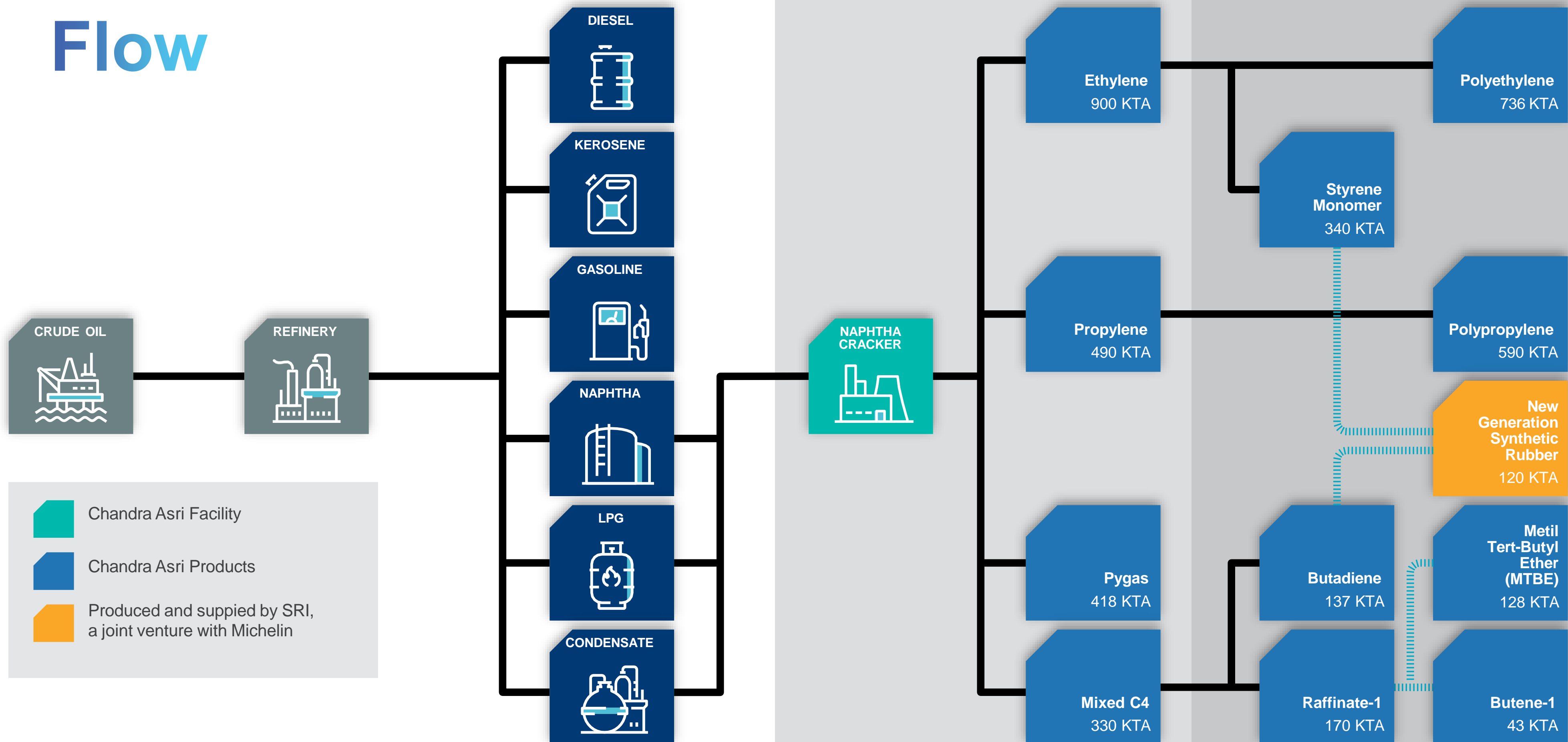
**Water Cooling
System**



Fire Prevention



Production Flow



➤ Petrochemical Portfolio and Its Applications

OUR PRODUCTS

Polyethylene

Polypropylene

Styrene Monomer

Butadiene

PRODUCT APPLICATION



Water Pipe



Wire Insulation



Chemical Tank



Houseware



Packaging



Film & Sheets



Fibers & Filaments



Toys



Automotive Parts



Appliances



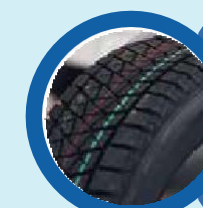
Food Containers



Car Interiors



Helmet Padding



Vehicle Tires



Synthetic Rubber



Gloves & Footwear

Chandra Asri Alkali: Supporting Downstreaming

Strategic Collaboration for Exponential Growth



Chandra Asri Group, through PT Chandra Asri Alkali (CAA), and the Indonesia Investment Authority (INA) signed an MoU to develop the CA-EDC plant, reduce Caustic Soda imports, and support the construction industry in Indonesia.

International Collaboration



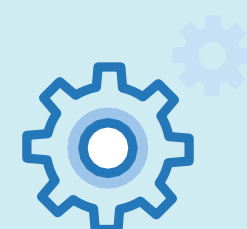
An agreement with Asahi Kasei Corporation (Japan) accelerates plant development, supporting the downstreaming of the electric vehicle (EV) industry.

Contribution to Net Zero Emission



Supporting downstreaming, including accelerating the electric vehicle (EV) ecosystem to achieve net-zero emissions in Indonesia by 2060.

Strategic Function of CA-EDC



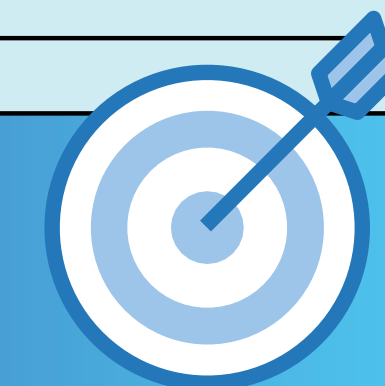
Providing Caustic Soda for aluminum production, including as a component of EV battery packs.

Annual Production Capacity



400,000 tons
Solid Caustic Soda
500,000 tons
Ethylene Dichloride (EDC)

Vital Raw Materials:



Caustic Soda supports sectors such as the alumina and nickel refining processes, the pulp & paper industry, and household goods manufacturing, while Ethylene Dichloride is a critical raw material to produce PVC, which is used in various construction sectors.

➤ Chandra Daya Investasi: Performance Stability through Superior Infrastructure

CDI Group, as an infrastructure platform, embraces sustainable growth through asset optimization and future expansion. Located in Cilegon, Indonesia's leading industrial region, CDI focuses on four business categories:

Energy Pillar

Chandra Asri Group leads the energy industry with innovative solutions, covering electricity generation, energy & renewable energy services, and electricity support – from steam power to solar panels to encourage sustainable energy diversification.

Water Pillar

Chandra Asri Group presents innovative solutions by providing clean water services for industries in Cilegon, including demineralized water treatment installations, water recycling plants, and wastewater treatment plants with membrane, ultrafiltration, ion exchange, and biological treatment technologies.

Ports & Storage Pillar

Chandra Asri Group provides ports and storage services business for refined chemical and petroleum products.

Logistics Pillar

Chandra Asri Group is pioneering its shipping and warehousing business, focusing on serving the needs of the Company and potential future external customers. Through this pillar, the Company is also developing its shipping management and inland logistics businesses.





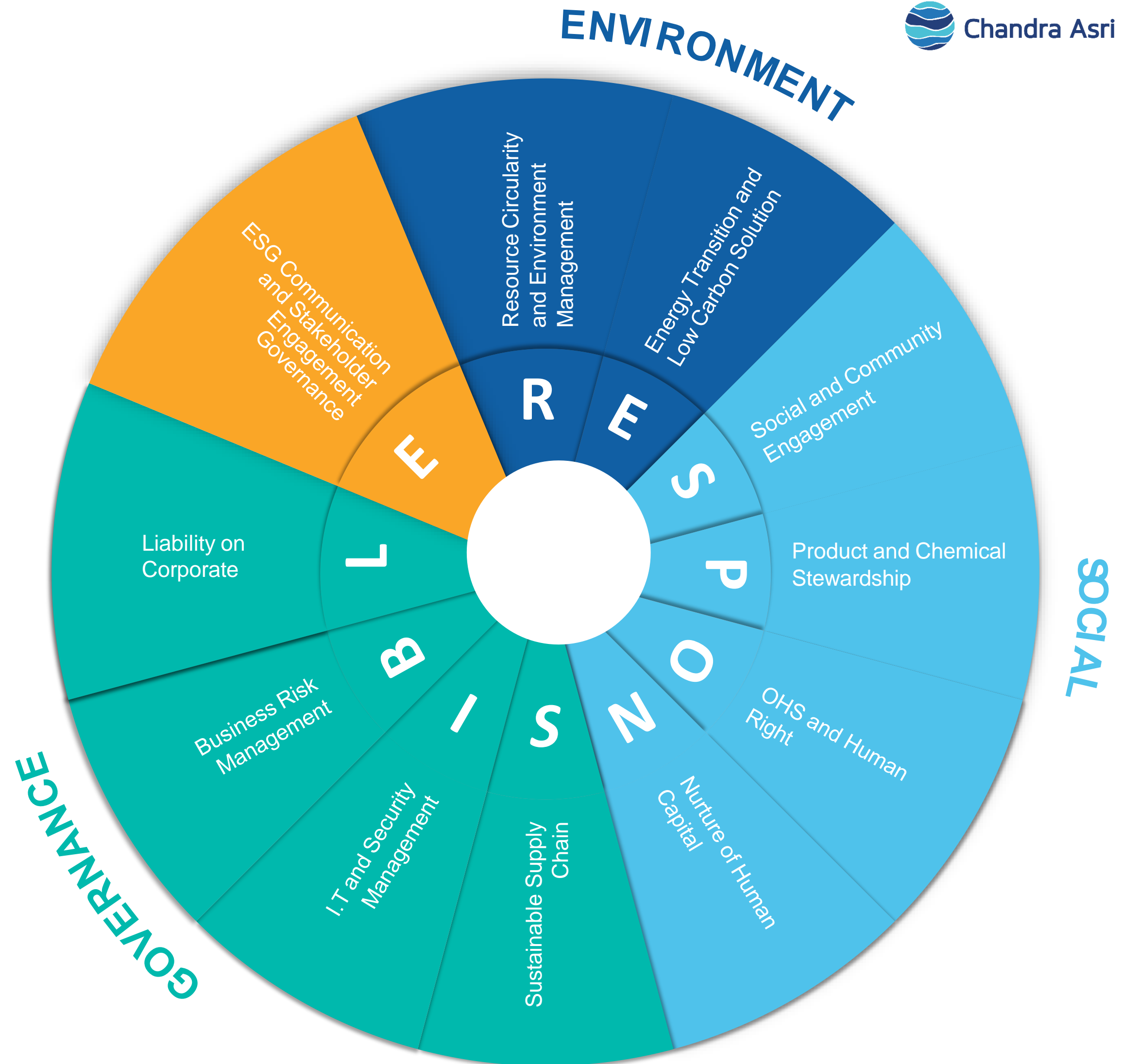
➤ Environmental, Social, and Governance (ESG)

➤ Creating Sustainable Future

We established our brand new Sustainability Framework to mitigate risks and seize opportunities from global megatrends in environment; climate change and resource scarcity, and to address the challenge on ranking prioritization, stakeholder aspirations, and peer benchmarking.

Sustainability Framework

RESPONSIBLE



➤ Creating Sustainable Future

We are committed to minimizing operational impact to environment, reducing carbon footprint and maintaining zero waste throughout the value chain.



Reducing Carbon Emissions Through Technology Investments

➤ Operates electric forklifts, replacing fuel-based forklifts.



➤ Invests in Enclosed Ground Flare, a smokeless flare technology to reduce noise and heat pollution



➤ Installs solar panel to generate renewable energy for office operations.



➤ Operates electric vehicles to contribute in reducing carbon emission and support domestic electric vehicles industry.



➤ Creating Sustainable Future



Circular Economy through Plastic Waste Management

- **Implementing Plastic Asphalt**, adding added value to plastic waste by turning it into asphalt mixture.
- Empowering communities and educational environments to participate in **plastic waste management programs based on a circular economy concept** to provide economic value & benefits and prevent waste from leaking into the ocean through the IPST ASARI, SAGARA, and Tanara Waste Management programs.
- Supporting the initiative from Cilegon DLH: **Collaborative Circular Economy Waste Management in Cilegon Schools (KOLASE)**, which provides education on waste management and its benefits to raise awareness among school residents in Cilegon City, in collaboration with waste banks.

➤ Creating Shared Value for Community

Our CSR program is designed around 4 pillars to capture all aspects in improving community welfare and encouraging our employees to be involved in making changes.



4 CSR Pillars

Education

1. Outstanding Student Scholarship
2. Banten Petrochemical Industrial Polytechnic Service Bond Program
3. Environmentally Friendly School
4. Training for High School Teachers
5. Collaborated with HHI to Improve School Infrastructure

Health

1. Mother and Child Health Intervention
2. Sanitation and Clean Water for the Community

Economy

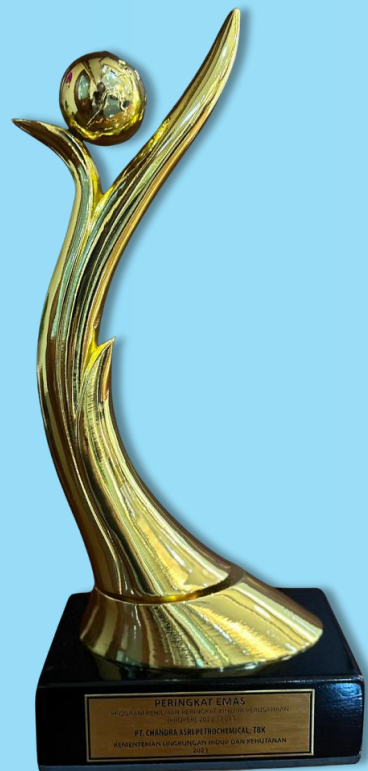
1. Economy Empowerment through a Mentoring Program for Managing and Sorting Dry Waste

Social-Environment

1. Community Social Program
2. Pollution Prevention and Environmental Conservation Program

Source: Data 2021

➤ Awards for Company Achievements



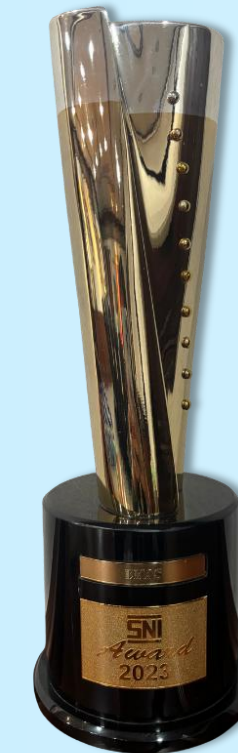
PROPER GOLD –
Ciwandan Site Office
2023

from the Indonesian
Ministry of Environment
and Forestry



**National Lighthouse
Industry 4.0 2024**

from Indonesian
Ministry of Industry



SNI Award 2023
GOLD for Category:
Large Organizations in
the Chemical,
Pharmaceutical,
Textile, and Mining Sector
Goods

from BSN



ASEAN Business Awards 2023
Winner of the Large Enterprise Type
Plastic Waste Circularity

from the ASEAN Business Advisory
Council



Subroto Award 2024
Energy Efficiency Sector Emission
Reduction Contribution Group

from the Indonesian Ministry of
Energy and Mineral Resources



➤ Digital Transformation

➤ Digital Transformation at Chandra Asri Group

Digital transformation is the primary foundation for achieving operational excellence and sustainable competitive advantage, in line with Chandra Asri Group digital roadmap.

Every digital initiative is aimed at strengthening the Company's cybersecurity posture, with reference to the ISO 27001 standard as part of the awareness building phase and closing identified gaps.

Chandra Asri Group integrates digital technology into business processes and manufacturing operations to drive efficiency, enhance outcomes, and better serve customers.

- Enhanced plant reliability
- Zero loss, zero breakdown, zero incident
- Reduction in maintenance costs
- Efficient business processes
- Increased profitability
- Development of competencies and capabilities in human resources



➤ Implementation of Digital Transformation

OPERATIONAL TECHNOLOGY

implementing a **digital twin technology** using a **3D plant model** integrated with an Asset Information Management System as a single source of truth to support engineering, inspection, and maintenance work.

Digitalization was also implemented through control room rejuvenation, providing a digital dashboard for monitoring plant operations and a board screen for more optimal shift handovers.

SAP S/4HANA CLOUD

Digital transformation is carried out through a strategic transition from SAP ECC to cloud-based SAP S/4HANA, to increase efficiency in every existing business process.

The implementation of the S/4HANA system supports processes across every department, including automation of supply chain, warehouse, logistics, operations & maintenance, while also improving the efficiency of finance and sales processes. System enhancements also apply to planning & budgeting, as well as the internal travel system.



ADVANCED PROCESS CONTROL

Implementing process automation technology to optimize factory production processes. This technology helps improve operational stability, energy efficiency, and optimize profit margins, in an effort to realize a smart industry.

DIGITALIZATION OF HR SYSTEM

Comprehensive digitalization of HR processes is implemented through an integrated platform, covering employee self-service, administrative management, performance evaluation, promotion & progression processes, and recruitment to enhance employee experience and operational efficiency.



DIGITALIZATION OF IT SERVICE MANAGEMENT (ITSM)

Implementing online-based IT Service Management (ITSM) to support monitoring, evaluation, incident reporting, and service requests.





➤ **A Great Place
to Work**

➤ Grow What Matters with Us

At Chandra Asri Group, we are Your Growth Partner. Chandra Asri Group connects you to the learning, resources and opportunities you need to do your best work, confidently take on the industry's biggest challenges, and create lasting impact on the people, businesses and communities we serve.

➤ Working with the Best Team

- Learn from the Expert: **We are leading in the industry**
- Chandra Asri Academy: **Incentive training program**
- 70:20:10 learning method (70% OJT, 20% Coaching, 10% Classroom)
- Work-life balance
- Progressive career path
- Chance to maximize potential
- Positive culture and values
- Competitive compensation
- Competency-based reward
- Work inspired, with larger purpose
- Socially and environmentally responsible company



LOCATIONS

Head Office

Wisma Barito Pacific Tower A, 7th Floor
Jl. Let. Jend. S. Parman Kav. 62-63
Jakarta 11410, Indonesia

T : (62-21) 530 7950
F : (62-21) 530 8930

Chandra Asri Plant, Ciwandan Site

Jl. Raya Anyer Km.123
Ciwandan, Cilegon Banten
42447, Indonesia

T : (62-254) 601 501
F : (62-254) 601 838/843

Chandra Asri Plant, Pulo Ampel Site

Desa Mangunreja Puloampel,
Serang Banten 42456,
Indonesia

T : (62-254) 575 0080
F : (62-254) 575 0085